

Basic Report



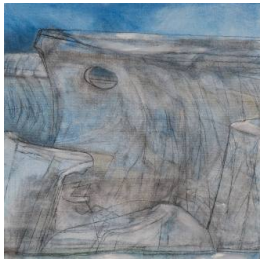
Title: Variations on a Theme (Splintered Ice Pink)
Date: 1987
Medium: Oil and Acrylic on Board



Title: Glacier Knot
Date: 1979
Medium: Pen, Ink and Mixed Media on Board



Title: Cliff Face
Date: 1952
Medium: Oil on Canvas



Title: Untitled
Date: 1994
Medium: Oil on Canvas



Title: [Untitled - Splintered Ice]
Date: 1993
Medium: Gouache on Paper



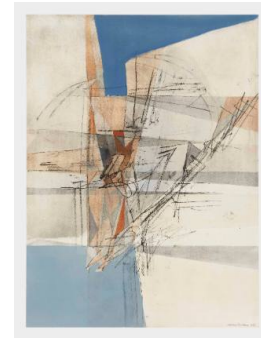
Title: Blue Glacier
Date: 1978
Medium: Gouache on Paper



Title: Blue Snout, Glacier Study
Date: 1951-1978
Medium: Gouache and Mixed Media on Paper



Title: Glacier Embrace 3 (Evening)
Date: 1951-1986
Medium: Pencil and Wash on Paper



Title: Glacier
Date: 1978
Medium: Gouache on Paper



Title: Study For Upper Glacier, Grindelwald
Date: 1949
Medium: Off-set Drawing on Paper



Title: Glacier Field
Date: 1978
Medium: Mixed Media on Card



Title: Glacier Encounter
Date: 1976
Medium: Pen, Ink and Oil on Hardboard



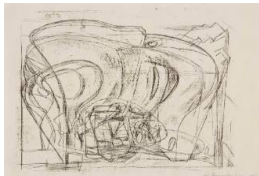
Title: Variation on a Theme (Suspended Ice)
Date: 1987
Medium: Oil on Canvas Board



Title: Glacier, Switzerland
Date: 1949
Medium: Mixed Media on Paper



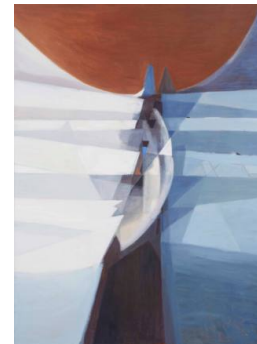
Title: [Glacier study]
Date: 1949
Medium: Mixed Media on Paper



Title: Glacier Drawing
Date: 1950
Medium: Off-set Drawing on Paper



Title: Glacier Study with Guide Cutting Steps
Date: 1949
Medium: Off-set Drawing and Wash on Paper



Title: Chasm
Date: 1980
Medium: Oil on Canvas



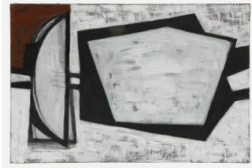
Title: Glacier Snout
(Pink)
Date: 1978
Medium: Gouache on Paper



Title: End of the Glacier
Upper Grindelwald
Date: 1949
Medium: Gouache and
Pencil on Paper



Title: Glacier Nocturne
Date: 1950
Medium: Monotype and Oil
on Board



Title: White, Black and
Terracotta
Date: 1954
Medium: Oil on Canvas