

# Basic Report

---



**Title:** Arrieta  
(Tabayesco)  
**Date:** 1989  
**Medium:** Pencil and Acrylic  
on Paper



**Title:** Lanzarote Rock  
Forms  
**Date:** 1992  
**Medium:** Chalk on Black  
Paper



**Title:** Volcanic Island  
(near Montana del  
Fuego)  
**Date:** 1989  
**Medium:** Pencil on Paper



**Title:** Study For Upper  
Glacier, Grindelwald  
**Date:** 1949  
**Medium:** Off-set Drawing  
on Paper



**Title:** Formentera  
**Date:** 1958  
**Medium:** Pen, Ink and  
Wash on Paper



**Title:** Monte Olivetti,  
Tuscany  
**Date:** 1954  
**Medium:** Pencil and  
Tempera on Paper



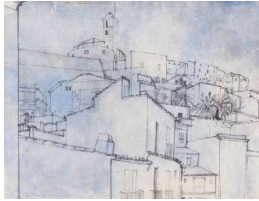
**Title:** La Geria  
**Date:** 1991  
**Medium:** Pastel on Paper



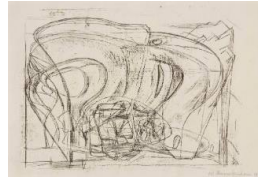
**Title:** Glacier,  
Switzerland  
**Date:** 1949  
**Medium:** Mixed Media on  
Paper



**Title:** [Glacier study]  
**Date:** 1949  
**Medium:** Mixed Media on  
Paper



**Title:** Dalí's Vila (Night) Ibiza  
**Date:** 1958  
**Medium:** Pen, Ink and Wash on Paper



**Title:** Glacier Drawing  
**Date:** 1950  
**Medium:** Off-set Drawing on Paper



**Title:** Glacier Study I  
**Date:** 1949  
**Medium:** Off-set Drawing and Chalk on Paper



**Title:** Glacier Study with Guide Cutting Steps  
**Date:** 1949  
**Medium:** Off-set Drawing and Wash on Paper



**Title:** Clay Working, Chiusure  
**Date:** 1954  
**Medium:** Off-set Drawing and Tempera on Paper



**Title:** Evening, July [11th July, Chiusure]  
**Date:** 1954  
**Medium:** Pencil and Tempera on Paper



**Title:** Chiusure May 1955  
**Date:** 1955  
**Medium:** Pencil and Tempera on Paper



**Title:** End of the Glacier Upper Grindelwald  
**Date:** 1949  
**Medium:** Gouache and Pencil on Paper



**Title:** Glacier Nocturne  
**Date:** 1950  
**Medium:** Monotype and Oil on Board



**Title: Storm Brewing**

**Date:** 1944

**Medium:** Pen, Ink and  
Gouache on Paper



**Title: St Monans**

**Date:** 1982

**Medium:** Pencil and Oil on  
Paper



**Title: 8 Lines No.5**

**Date:** 1986-95

**Medium:** Mixed Media on  
Paper



**Title: Blue Glacier**

**Date:** 1978

**Medium:** Gouache on Paper



**Title: Blue Snout,  
Glacier Study**

**Date:** 1951-1978

**Medium:** Gouache and  
Mixed Media on Paper



**Title: Glacier Embrace  
3 (Evening)**

**Date:** 1951-1986

**Medium:** Pencil and Wash  
on Paper



**Title: Glacier**

**Date:** 1978

**Medium:** Gouache on Paper



**Title: Glacier Snout  
(Pink)**

**Date:** 1978

**Medium:** Gouache on Paper



**Title: Calabria, Palinuro**

**Date:** 1955-88

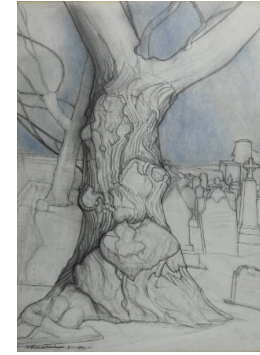
**Medium:** Oil and Pencil on  
Card



**Title:** Red Canyon  
**Palinuro Campagna [27 April]**  
**Date:** 1955  
**Medium:** Pencil, Tempera and Gouache on Paper



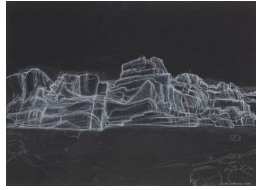
**Title:** St Martins Lower Town I  
**Date:** 1951  
**Medium:** Pencil and Oil on Hardboard



**Title:** Old Oak Tree (St Andrews Cathedral Series)  
**Date:** 1979-85  
**Medium:** Pencil and Crayon on Board



**Title:** St Regulus Tower (St Andrews Cathedral Series)  
**Date:** 1979  
**Medium:** Pencil and Oil on Hardboard



**Title:** Cellardyke - Fife  
**Date:** 1992  
**Medium:** Chalk on Paper



**Title:** Deodar Tree  
**Date:** 1980  
**Medium:** Pencil on Paper



**Title:** Deodar Tree I  
**Date:** 1980  
**Medium:** Pencil on Paper



**Title:** Weeping Ash, The Hauff, Dundee  
**Date:** 1980  
**Medium:** Pencil on Card



**Title:** St Ives No. 3  
**Date:** 1984-1985  
**Medium:** Charcoal, Oil and Conte on Paper





**Title: St Ives from Salubrious House**  
**Date:** 1968  
**Medium:** Pencil and Oil on Paper



**Title: Stromness, Orkney No.1**  
**Date:** 1985  
**Medium:** Pencil and Oil on Paper



**Title: Untitled - St Andrews Cathedral Series**  
**Date:** 1979  
**Medium:** Pencil and Wash on Paper



**Title: Cactus Tree**  
**Date:** 1955  
**Medium:** Oil and Pencil on Paper



**Title: Canyons Palinuro Campagna**  
**Date:** 1955  
**Medium:** Pencil and Tempera on Paper



**Title: St Ives from the Gap**  
**Date:** 1950  
**Medium:** Pen and Ink on Paper



**Title: Cornish Harbour**  
**Date:** 1940s  
**Medium:** Off-set Drawing on Paper



**Title: St Ives Harbour. Early Morning**  
**Date:** 1986  
**Medium:** Pencil and Wash on Paper



**Title: Palinuro Campagna**  
**Date:** 1955  
**Medium:** Pencil and Tempera on Paper



**Title:** St Nicholas Chapel, St Ives  
**Date:** 1993  
**Medium:** Chalk on Black Paper



**Title:** Scilly Islands (Landscape with Cows)  
**Date:** 1940s  
**Medium:** Off-set Drawing and Gouache on Paper



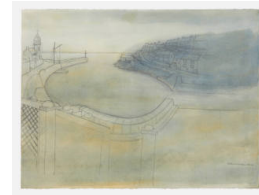
**Title:** Island Factory St Ives (Camouflage No.2)  
**Date:** 1944  
**Medium:** Pastel on Paper



**Title:** Palinuro, Campagna  
**Date:** 1955  
**Medium:** Gouache and Pencil on Paper



**Title:** Cornish Landscape  
**Date:** 1940s  
**Medium:** Pen, Ink and Wash on Paper



**Title:** Porthleven  
**Date:** 1951-1986  
**Medium:** Gouache and Pencil on Paper



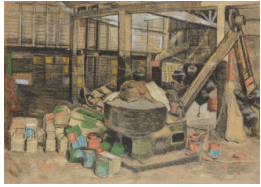
**Title:** Untitled [St Ives Church]  
**Date:** 1990s  
**Medium:** Pencil on Paper



**Title:** Balmullo (West) Fife  
**Date:** 1990  
**Medium:** Pencil on Paper



**Title:** Torcello [21 June]  
**Date:** 1954  
**Medium:** Pencil and Wash on Paper



**Title:** Island Factory St Ives Series  
**(Camouflage No.1)**  
**Date:** 1944  
**Medium:** Pastel on Paper



**Title:** Toy Workshop,  
The Digey, St Ives  
**Date:** 1944 - 5  
**Medium:** Pencil and Crayon  
on Paper



**Title:** Whirl Pool  
**Date:** 1979  
**Medium:** Mixed Media on  
Card



**Title:** Wind Music No.4  
**Date:** 1980  
**Medium:** Mixed Media on  
Card



**Title:** Hailstorm  
Porthmeor  
**Date:** 1976  
**Medium:** Pen and Ink on  
Board



**Title:** Formation 1  
**Date:** 1978  
**Medium:** Mixed Media on  
Card



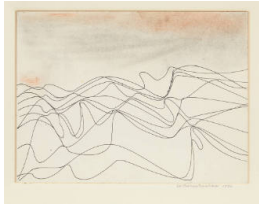
**Title:** North Sea Fife  
**Date:** 1977  
**Medium:** Mixed Media on  
Card



**Title:** Shell  
**Date:** 1979  
**Medium:** Mixed Media on  
Card



**Title:** Glacier Knot  
**Date:** 1979  
**Medium:** Pen, Ink and  
Mixed Media on Board



**Title:** Linear Development No.1 (12 Lines)  
**Date:** 1982  
**Medium:** Pen, Ink and Oil on Card



**Title:** Wave Energy  
**Date:** 1975  
**Medium:** Pen, Ink and Oil on Card



**Title:** Linear Movement and Circle 2  
**Date:** 1982  
**Medium:** Pen, Ink and Oil on Card



**Title:** Orange Sky 2  
**Date:** 1981  
**Medium:** Mixed Media on Card



**Title:** St Andrews Bay Series (Grey)  
**Date:** 1981  
**Medium:** Mixed Media on Card



**Title:** (Sea Rock - Line Drawing)  
**Date:** 1995  
**Medium:** Pen and Ink on Card



**Title:** Volcanic Formations No. 1  
**Date:** 1992  
**Medium:** Gouache on Paper



**Title:** Force 8  
**Date:** 1976  
**Medium:** Mixed Media on Card



**Title:** Ruta de Los Volcanes, Lanzarote  
**Date:** 1989  
**Medium:** Pencil and Wash on Paper





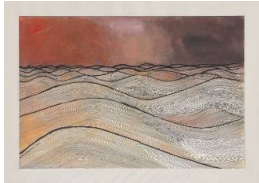
**Title:** La Geria (Study  
Volcanic Rock)  
**Lanzarote**  
**Date:** 1991  
**Medium:** Pastel on Paper



**Title:** Rocks,  
Formentera  
**Date:** 1958  
**Medium:** Pen, Ink and  
Wash on Paper



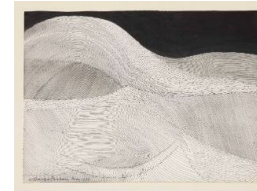
**Title:** Sea Sound No. 9  
**Date:** 1980  
**Medium:** Mixed Media on  
Hardboard



**Title:** Eye of the Storm  
**Date:** 1980  
**Medium:** Mixed Media on  
Hardboard



**Title:** Linear Meditation  
3  
**Date:** 1991  
**Medium:** Mixed Media on  
Hardboard



**Title:** Clay Country,  
Tuscany  
**Date:** 1979  
**Medium:** Mixed Media on  
Card



**Title:** Incoming  
Movement in Water  
(Ice Blue and White)  
**Date:** 1988  
**Medium:** Pen, Ink and Oil  
on Card



**Title:** Surge  
**Date:** 1978  
**Medium:** Mixed Media on  
Card



**Title:** Glacier Field  
**Date:** 1978  
**Medium:** Mixed Media on  
Card



**Title: St Andrews Bay  
Series No. 28**  
**Date:** 1981  
**Medium:** Mixed Media on Card



**Title: Glacier Encounter**  
**Date:** 1976  
**Medium:** Pen, Ink and Oil on Hardboard



**Title: January Sea**  
**Date:** 1979  
**Medium:** Mixed Media on Card



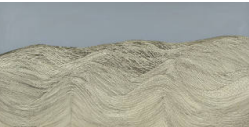
**Title: Line Series**  
**Date:** 1983  
**Medium:** Mixed Media on Hardboard



**Title: Lava Forms**  
**Date:** 1993  
**Medium:** Pastel and Wash on Paper



**Title: Lava Forms  
Lanzarote 1**  
**Date:** 1993  
**Medium:** Chalk on Black Paper



**Title: Wind Rhythm**  
**Date:** 1980  
**Medium:** Mixed Media



**Title: Line Series with  
Circle**  
**Date:** 1975  
**Medium:** Mixed Media on Paper



**Title: [Caldera  
Quemada, La Vegueta]**  
**Date:** 1991  
**Medium:** Pastel on Paper



**Title:** Rip-Current(?)  
**Date:** 1976  
**Medium:** Pen and Ink on Paper



**Title:** Snow Shelf, Fife  
**Date:** 1978  
**Medium:** Mixed Media and Board



**Title:** Breaker (After Turner)  
**Date:** 1976  
**Medium:** Mixed Media on Paper



**Title:** Linear Development Island End  
**Date:** 1975  
**Medium:** Mixed Media on Card



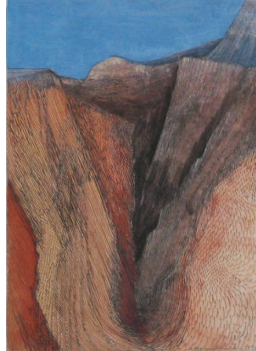
**Title:** Salt Pans No. 6  
**Date:** 1990  
**Medium:** Acrylic on Card on Hardboard



**Title:** Music of the Sea  
**Date:** 1976  
**Medium:** Pen, Ink and Oil on Card



**Title:** Box Factory St Ives [sketch]  
**Date:** 1948  
**Medium:** Pen, Ink and Gouache on Board



**Title:** Mountain in Profile  
**Date:** 1979  
**Medium:** Mixed Media on Board



**Title:** Porthmeor, Orcha  
**Date:** 1975  
**Medium:** Mixed Media on Paper



**Title: Mousehole**  
**Date:** 1971  
**Medium:** Pencil on Paper



**Title: Six Glacier Studies**  
**Date:** 1949  
**Medium:** Off-set Drawing and Wash on Paper



**Title: Porthleven from Tye Rock (Study for St Ives Festival Painting)**  
**Date:** 1951  
**Medium:** Off-set Drawing and Gouache on Paper



**Title: White Rocks**  
**Date:** 1953  
**Medium:** Off-set Drawing and Other Medium on Paper



**Title: St Andrews looking West**  
**Date:** 1981  
**Medium:** Mixed Media on Card